

# HOPE

## HEMPSTEAD COUNTY RELOCATION & TOURISM GUIDE



**SWARK.TODAY**  
Southwest Arkansas Today



**2023**

Thank you for supporting  
Hempstead Hall!



*2013 - 2023 and counting...*

[HempsteadHall.com](http://HempsteadHall.com)

# WELCOME

## FROM THE HOPE & HEMPSTEAD COUNTY CHAMBER OF COMMERCE

On behalf of the Hope-Hempstead County Chamber of Commerce Board of Directors, I would like to welcome you to our city, Hope, AR and Hempstead County. Hope began in 1873 when a railroad was built through the area and was named after Hope Loughborough, the daughter of a railroad executive.

Hempstead County is named for Edward Hempstead, a delegate to the U.S. Congress from the Missouri Territory, which included present-day Arkansas at the time. Hope is the county seat and we are so fortunate to be the birthplace and home to several notable individuals including former U.S. President Bill Clinton, former Arkansas Governor Mike Huckabee, and his daughter and current Arkansas Governor Sarah Sanders Huckabee. There must be something in the water to have so many distinguished and prominent citizens from this community to succeed!

I would also like to introduce to you the Hope-Hempstead County Chamber of Commerce Board of Directors, listed below:

#### Board of Directors:

- **Maurice Henry, Vice President**
- **Jacob Jones, Treasurer**
- **Arnetta Bradford, Secretary**
- **Nathaniel Holyfield, Past President**
- **Christine Holt**
- **Aley Mendoza**
- **Bren Yocom**
- **Jonathan Crossley**
- **Robin Cheatham**

Please let us know how we can be of assistance to you. Service is what we do! As so eloquently stated by our former President Bill Clinton, "I still believe in a place called Hope".

**Charlotte Bradley**  
**Hope-Hempstead County Chamber of Commerce**  
**Board of Directors President**

Welcome to Hope, a slice of the good life! We started as a small railroad town and grew into one of the largest towns in Southwest Arkansas. With I-30 on our doorstep, you have access to surrounding states and other large cities. When you enter into our town, you will see our southern charm from our downtown area to small shops sprinkled throughout the city.

While here, enjoy our restaurants and hotels that share our southern hospitality. Hope is the hometown of famous people such as President Bill Clinton, Governor Mike Huckabee and Paul Klipsch. Museums in our downtown area include the Clinton Birthplace National Park and the Klipsch Heritage Museum. We are also blessed to have an abundance of outdoor fun from our lakes and rivers to state and national parks within a short drive. Bring your fishing rod and hunting gear! Also, Hope is known nationwide for its large and sweet watermelons that we celebrate with our Watermelon Festival every August.

From our churches, civic groups and sporting events, we offer something for everyone. If you are already relocating or thinking about it, welcome to a place called Hope.

**City of Hope Mayor, Don Still**

Welcome to Hope, AR! As the Hempstead County Judge, I would like to extend a warm welcome to you and invite you to experience everything that Hope and Hempstead County have to offer. Hempstead County is home to many attractions, including President William Jefferson Clinton's National Birth Place Site and Historic Washington State Park. The county also has two wildlife Management Areas, Bois D'Arc Wildlife Management area, and Millwood Lakes, which feature camping as well as hunting and fishing.

As County Judge, I am very excited to say that we are proud to be conducting business in our new Courthouse, which relocated to Downtown Hope in early 2022. Our new Courthouse has been fully remodeled and is considered one of the most prestigious Courthouses in the State of Arkansas! We are fortunate to have a variety of arts and entertainment, as well as several festivals and events throughout the year and I look forward to continued growth and new businesses with the revitalization of Downtown Hope.

There is so much more I could say about Hope, Hempstead County and our community, but I know that it won't take you long to figure out just how special it really is. Please feel free to contact me at (870) 777-7800, ext 101 if there is anything that I can help you with. Again, WELCOME to Hope, Arkansas! We are thrilled that you chose to visit us and hope you enjoy every minute of your stay. Hempstead County is a great place to visit.....and an even better place to live!

**Hempstead County Judge, Jerry Crane**



The 2023 Relocation and Tourism  
Guide is published by SWARK.Today in  
partnership with the Hope/Hempstead  
County Chamber of Commerce.

**HH** Hope Hempstead  
County  
*Chamber of Commerce*



# Hope Hempstead County Chamber of Commerce

The Hope-Hempstead County Chamber of Commerce is dedicated to strengthening member businesses and promoting community involvement in order to stimulate growth and a positive town image within our local economy.

Anyone is welcome to stop by and meet our Chamber Executive Director, Christy Burns, and Chamber Administrative Assistant/Membership Manager, Trevor Moses. Together with the Chamber of Commerce Board of Directors, the staff at the Hope-Hempstead County Chamber of Commerce is here to serve our community and Chamber members.

What you see in Hope today did not happen on its own; it is the product of the wonderful people of our community putting their time and efforts into supporting each other.

The hard work and dedicated efforts of the Chamber can be seen on a regular basis. Watch for our Community Coffees, parades, Christmas events, Ribbon Cuttings, Business After Hours, and our renowned Hope Watermelon Festival.

The Chamber's achievements also include you! There are many ways you can become involved: attending events, becoming an Ambassador, participating as a sponsor, becoming a Chamber member, or being a volunteer.

Becoming a member of the Chamber aligns your business with other chamber member businesses and immediately strengthens your ability to succeed. When you become a member, you invest in your success, as well as the success of the entire Hope and Hempstead County region. The chamber offers networking opportunities throughout the year from weekly community coffees & monthly business after-hours to our annual meeting, a gathering of hundreds in our business community. Our online, searchable Chamber business directory has the potential to place your business in front of hundreds of thousands of potential customers.

For those thinking about moving to the Hope-Hempstead County area, the Chamber offers a relocation package that gives newcomers a comprehensive overview of living and working in the area. Our Relocation Packet is free of charge and packed full of beneficial information including maps, things to do, places to see and more! This relocation package contains the Relocation & Tourism Guide you are reading now which is published by SWARK. Today in partnership with the Hempstead County Chamber of Commerce. If you are visiting our town or just thinking about moving to Hempstead County, give us a call or stop by our office to receive your packet today!

Contact us today to learn more about becoming a part of our family - a part of the Hope-Hempstead County Chamber of Commerce.

As the Hope-Hempstead County Chamber of Commerce Executive Director, I would like to be the first to welcome you to a city of which we are all very proud. Welcome to Hope, Arkansas! Whether you are visiting or relocating, we are happy you are here.

Visitor satisfaction is very important to Hope and Hempstead County. A few things you don't want to miss while you are here include our historic attractions, local dining and shopping, lodging for your stay, our annual Watermelon Festival, and a multitude of events. Make plans to tour the President William Jefferson Clinton Birthplace Home National Historic Site along with Historic Washington State Park, which hosts the Jonquil Festival and the James Black's Bowie Heritage Festival. These two National Parks will show you how deeply rooted we are in the history of our community. Other areas of interest are the Paul W. Klipsch Visitors Center and our Hope Visitors Information Center, both located in Historic Downtown Hope.


If you are considering relocating to Hope or Hempstead County, we are thrilled and hopeful to have you! Other than the events and activities mentioned above, you will find many aspects you are looking for! There are wonderful public and private school options, and we are very proud to be the home of the University of Arkansas Hope-Texarkana. Hope also has many thriving industries and businesses, including the local hospital-Wadley Regional Medical Center. You will also find a list of the hundreds of churches within our community in the following pages of this guide. As for recreation, Hope is home to multiple public parks which include playgrounds, walking tracks, lakes, tennis courts, a public pool and much more.

Hope is an Arkansas Downtown Network Community under the Arkansas Department of Heritage Main Street Arkansas Program. Not only does the Hope Downtown Network encourage revitalization and historic preservation of Historic Downtown Hope, they offer annual events for our community and visitors alike. Downtown Hope will soon be home to our county's first pocket park.

Whether you are just stopping by, visiting in August to enjoy some ice-cold watermelon, or making Hope or Hempstead County your new home, we are here to help! Stop by the Hope-Hempstead County Chamber of Commerce located at 201 S Main Street, contact us at (870)777-3640, or email us at [hopenelonfest@yahoo.com](mailto:hopenelonfest@yahoo.com) for anything you may need! We also encourage you to visit our website at [hopeusa.com](http://hopeusa.com) which houses our up-to-date Community Calendar along with a plethora of information on Hope and Hempstead County.

**We "HOPE" to see you soon!!**

**Christy Burns**  
**Hope-Hempstead County Chamber of Commerce**  
**Executive Director**



**Hope**  
**Water & Light**

**105 N. ELM ST.**  
**HOPE, AR.**  
**(870) 777-3000**

**SOUTHWEST ARKANSAS**  
**★ TITLE COMPANY ★**



**112 SOUTH MAIN, SUITE B | PO BOX 766**  
**★ HOPE, ARKANSAS 71801 ★**  
**SWARTITLE.COM | 870-777-6300**



**FARMERS**  
**INSURANCE**

**COVERAGE THAT FITS YOUR NEEDS**  
**Home • Auto • Life • Business**



**Call me to get covered today!**  
**(870) 722-5373**  
**Rodney Orr**

**Your local Agent | AR Insurance**  
**Producer License # 1674237**

# CHAMBER STAFF



**Christy Burns**  
Executive Director



**Chamber of Commerce Board of Directors**



**Trevor Moses**  
Administrative Assistant/  
Membership Manager



**fs**  
**FOUR STATES**  
FURNITURE  
222 S. MAIN  
DOWNTOWN HOPE  
fourstatesfurniture.com  
(870) 777-9239



**SCAN HERE TO VISIT**  
[chamber.hopeusa.com](http://chamber.hopeusa.com)



# RELOCATING TO HEMPSTEAD COUNTY?

## FIND SCHOOLS, UTILITIES & VOTER REGISTRATIONS HERE

### CITY OF HOPE

City Hall - 206 W Avenue A  
JR Wilson, City Manager  
Don Still, Mayor (870) 777-6701  
Public Works Dept. (870) 777-8644  
Sanitation, Streets, Landfill

### HEMPSTEAD COUNTY

(870) 777-7800 Switchboard  
400 S Washington St.  
All courthouse offices:  
Hempstead County Judge  
Hempstead County Clerk  
Hempstead County Assessor  
Hempstead County Treasurer  
Hempstead County Sheriff  
Hempstead County Coroner  
Hempstead County Circuit Clerk

### MAIL

U.S. Post Office in Hope  
121 S. Laurel St. (870) 777-3500

### ELECTRICITY

Hope Water & Light  
105 N. Elm St. (870) 777-3000

Entergy 1-800-368-3749

Southwest Arkansas Electric Co-Op  
(870) 777-9176

### NATURAL GAS

CenterPoint Energy 1-800-992-7552

### WATER

Hope Water & Light  
105 N. Elm St. (870) 777-3000

Southwest Arkansas Water System  
(870) 722-6626

### INTERNET & TV

SW AR Telephone (870) 653-8222

Hope Prescott Video  
506 S. Walnut (870) 777-4684

AT&T 1-800-464-7928

Premier Broadband  
809 N Hervey St. (870) 777-5369

### AIRMAX

501 N. Hervey (903) 650-8311

### CHAMBER OF COMMERCE

The Hope/Hempstead County  
Chamber of Commerce  
201 S. Main St. (870) 777-3640

### DRIVERS LICENSE

State Revenue Office  
116 E. 12th St. (870) 777-3131

### LIBRARY

Hempstead County Library  
500 S. Elm St.  
(870) 777-4564

### HUMAN SERVICES

AR Department of Human Services  
116 N Laurel St.  
(870) 777-8656

### PUBLIC SCHOOLS - HOPE

Administration Hope Public Schools  
117 East Second St.  
(870) 777-2251

Clinton Primary School  
601 Lakeshore Dr.; grades (K-4).  
(870) 722-2723

Beryl Henry Elementary School  
2000 S. Main  
grades (5-6)  
(870) 777-6222

Yerger Middle School  
400 E. 9th St.  
grades (7-8).  
(870) 777-5134

Hope High School  
1700 S. Main;  
grades (9-12).  
(870) 777-3451

Hope Academy of Public Service  
601 W 6th St.  
(870) 722-2705

### PUBLIC SCHOOLS - BLEVINS

Blevins Public School District (K-12)  
5954 Hwy. 29 North  
Blevins, AR

District Administration  
(870) 874-2801

High School (7-12)  
(870) 874-2281

Elementary School (K-6)  
(870) 874-2283

### PUBLIC SCHOOLS - SPRING HILL

Spring Hill Public Schools (K-12)  
633 Hwy. 355 West  
Spring Hill, AR

District Administration  
(870) 777-8236

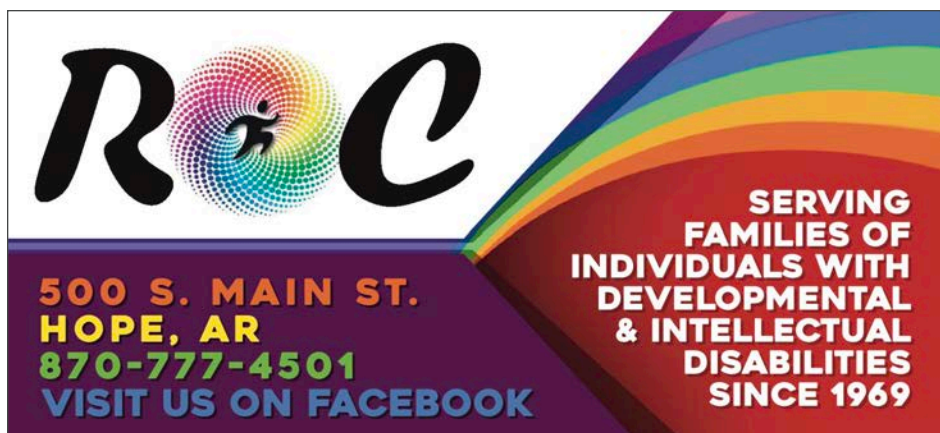
High School (7-12)  
(870) 722-7430

Elementary School (K-6)  
(870) 722-7240

### PRIVATE SCHOOLS

Garrett Memorial Christian School  
No. 1 Genesis Drive in Hope.  
Administrative Offices  
(870) 777-3256

First United Methodist Church  
Pre-school (ages 3, 4, and K)  
2300 S. Main. (870) 777-8816



# NEW TO HOPE AND HEMPSTEAD COUNTY? HELP IS A PHONE CALL AWAY FOR BASIC SERVICES

## INSURANCE

Anderson-Frazier Insurance  
910 S Main  
(870) 777-3481 or (870) 777-4661

David Parker State Farm  
807 East 3rd (870) 777-2929

Farm Bureau  
120 N Hervey, (870) 777-9002

Farmers Insurance/Rodney Orr  
1404 South Main (870) 722-5373

Farmers Union/Brandy Armstrong  
109 N. Hervey (870) 777-8414

Garrett Insurance Agency  
1500 West 3rd, (870) 777-6115

Heather Doucet State Farm  
500 W. Ave. "D", (870) 777-6198

Shelter Insurance/Trey Wright  
1300 South Main (870) 777-5710

Victoria's Insurance  
310 E. Greenwood St. (903) 556-5557

## FUNERAL HOMES

Brandon's Mortuary  
2912 AR-29, (870) 777-1666

Brazzel/Oakcrest Funeral Home  
1001 South Main, (870) 777-6772

Herndon-Fuqua Funeral Home  
403 South Main, (870) 777-4686

Hicks Funeral Home  
407 South Hazel, (870) 777-8674

## BANKS/FINANCE

Bank OZK  
600 South Main  
(870) 777-9999 or (870) 777-9888

Cadence Bank  
200 South Elm, (870) 777-2313

Diamond Bank  
400 South Main, (870) 777-3200

Farmers Bank & Trust  
201 East Third, (870) 777-2363

Red River Credit Union  
1513 Walmart Drive 1-800-822-3317

The First National Bank of Tom Bean  
301 N. Hervey St., (870) 777-5577

## REAL ESTATE

Hollis Realty  
1816 S. Main, (870) 722-6225

Lance and Associates  
411 W Ave. C, (870) 777-1420

Sisson Real Estate  
320 N. Hervey, (870) 777-6821

Walker Realty  
622 N Hervey St. (870) 777-4700

## ACCOUNTING

Burke & Walker  
3337 Hwy 29 N (870) 777-8258

Dowd & Company  
507 S Main St., (870) 777-8284

H&R Block  
910 N Hervey, (870) 777-5416

Stefani Espinoza  
114 S Elm St., (870) 354-3213

## GROCERY

Barry's  
301 E 2nd St., (870) 777-4404

Piggly Wiggly  
1704 E 3rd St., (870) 777-8831

Super 1  
909 N Hervey, (870) 777-5500

Tienda San Luis  
621 W 3rd St., (870) 474-5020

Wal-Mart  
2400 N Hervey, (870) 777-5500

## EMPLOYMENT SERVICES

Express Employment Professionals  
204 N Hervey, (870) 773-1313

Manpower  
809 N Hervey, (870) 777-0365



Board Certified Physician operated Medical Aesthetics Spa and Wellness Center. We offer non-surgical solutions for amazing cosmetic results and overall wellness, both inside and out. Come rejuvenate with us!!

**Hourglass Aesthetics Medical Spa & Wellness Center**  
1100 South Main Street Hope, AR  
870-770-4467  
www.hourglassmedicalspa.com



**HOPE HAVEN**  
ASSISTED LIVING

500 W. 23RD  
HOPE, AR 71801  
870-777-8655

# PRIVATE MEDICAL SERVICES

## PHYSICIANS

Access Medical Clinic  
405 S. 16th St. Suite A  
(870) 777-0007

Christus Trinity Clinic  
Dr. William Bennett, MD  
Devin Shepard, MSN, RN, FNP-C  
805 Trinity Dr.  
(870) 722-1020

Dr. Eve Covas, MD  
205 Smith Road Suite D  
(870) 777-8420

Dr. George Garrett, MD  
302 Bill Clinton Dr. Suite A  
(870) 777-4868

Dr. Dale E. Goins, MD  
302 Bill Clinton Dr. Suite B  
(870) 777-8115

Hempstead County Health Unit  
808 W. 5th St.  
(870) 777-2191

Dr. Phillip Pace, MD  
302 Bill Clinton Dr. Suite B  
(870) 777-8115

Pafford Health Systems Medical Clinic  
100 E. 20th, Suite D (870) 729-1911

Premiere Central Pediatrics  
Dr. Sandra A. Sooman, MD  
900 S Main St.  
(870) 777-6002

Quality Care Pediatrics  
W. Ladell Douglas, MD  
100 E 20th Street Ste. B  
(870) 777-2100

## DENTISTS

Carter Family Dentistry  
Robert Carter, DDS  
800 S Main St.  
(870) 777-5769

Coffee Family Dental  
Trevor Coffee, DDS  
901 S Elm St.  
(870) 777-2577

Sitzes Family Dental  
Lester Sitzes III DDS  
1819 S Main St.  
(870) 777-4466

Smiles of Arkansas  
110 E 18th St.  
(870) 777-6453

Dr. James K. Tyson DDS  
411 W 16th St.  
(870) 777-5861

## HOSPITAL

Wadley Regional Medical Center at Hope  
2001 S Main St.  
(870) 722-3800  
Open 24 hours

Wadley Regional Medical  
Emergency Room  
Open 24 hours  
Dial 911

## PHARMACIES

Express RX  
717 S. Main St.  
(870) 777-4643

Medi-Mart Pharmacy  
1523 S. Main Street  
(870) 777-5555

Super 1 Pharmacy  
909 N Hervey St.  
(870) 777-6989

Walmart Pharmacy  
2400 N. Hervey St.  
(870) 777-1600

Walgreens Pharmacy  
1004 W. Commerce Blvd.  
(870) 777-4830

## SERVICES

Centerwell Home Health  
209 S Main St.  
(870) 292-4937

Gentiva Personal Care  
203 S Main St.  
(870) 474-6710

Heather Manor Nursing & Rehabilitation  
400 West 23rd Street  
(870) 777-3448

Hope Haven Assisted Living  
500 W. 23rd Street  
(870) 777-8655

Hourglass Aesthetics  
Medical Spa & Wellness Center  
1100 S Main St  
(870) 770-4467

Pafford Medical Services  
3509 W. 16th Street  
(870) 777-7660  
EMERGENCY DIAL: 911

## OPTOMETRISTS

My Eye Doctor  
2510 N Hervey St.  
(870) 722-2200



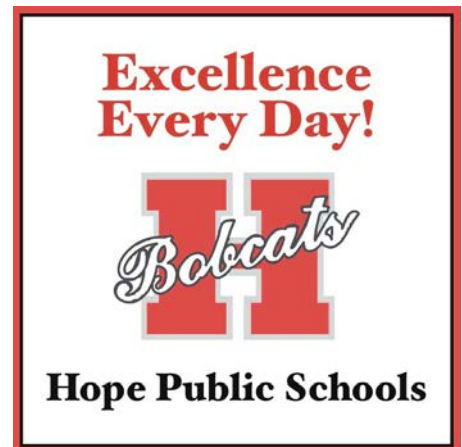
**Unity**  
BAPTIST CHURCH  
welcomes you to Hope!

402 S Hervey St. - (870) 777-4078  
**We Have A Place For You!**



*Brazzel Oakcrest*  
THE FUNERAL HOME. "We care"

1001 S Main St Hope, AR  
**870-722-6772**  
Eddie Brazzel, Director



**Excellence  
Every Day!**

*Bobcats*

**Hope Public Schools**



# RENTAL PROPERTIES, LODGING & EVENT VENUES

## RENTAL PROPERTY & APARTMENTS

Apartments of Hope

300 W. Avenue B, (870) 777-4522

Caney Creek Estates Mobile Home Park  
1705 W 3rd St., (870) 777-2035

Canyon Creek Apartments  
303 W 23rd St., (870) 722-2292

Emerald Village  
2406 Rocky Mound Rd., (870) 292-4140

Fulton Square Apartments  
801 Mack St., (870) 777-4162

Hope Square Apartments  
904 S Grady St. #33, (870) 777-2693

Imperial Apartments  
1305 S Main St., (870) 703-3536

Live Oak Apartments  
1806 N Hazel, (870) 777-3389

Pleasant Ridge Apartments  
1305 E 3rd St., (870) 722-5114

The Peaks at Hope

2206 Bill Clinton Dr., (870) 722-2964

## LODGING

America's Best Value Inn/Suite  
2205 N. Hazel, (870) 777-4676

Best Western of Hope  
1800 Holiday Dr., (870) 777-9222

Coulter Farmstead  
209 Gray St. Washington, AR (870) 826-5391

Hampton Inn & Suites  
2700 N. Hervey, (870) 777-4567

Holiday Inn Express  
2600 N. Hervey, (870) 722-6262

Hope Village Inn & RV Park  
2611 N. Hazel, (870) 777-4665

Motel 6  
1600 N. Hervey, (870) 722-1904

Relax Inn & Suites  
1504 N. Hazel, (870) 777-0777

Super 8 by Wyndham

2000 Holiday Dr., (870) 777-8601

Washington Grace Cottage  
215 SE Carroll, Washington, AR (870) 703-8256

## MEETING & EVENT VENUES

Coulter Farmstead  
209 Gray St. Washington, AR, (870) 826-5391

Hampton Inn  
2700 N. Hervey St., (870) 777-4567

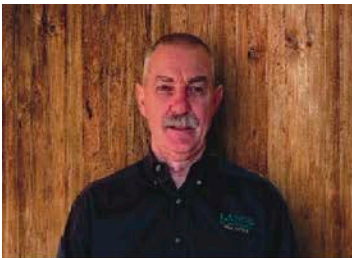
Hempstead Hall  
2500 S. Main St., (870) 722-8565

Ice Castle  
617 E. 2nd St.

The First National Bank of Tom Bean  
301 N. Hervey St., (870) 777-5577

The Venue at Twelve Oaks  
4177 Hwy 29 N, (870) 703 4643

Timeless Traditions  
474 Hempstead 7, (870) 397-3370



**STEVE LANCE**  
Owner/Principal  
Broker



**LINDSEY  
TOWNSEND**  
Executive Broker



**TRENACE  
MCGINNIS-STUART**  
Agent



**GAYLE DIXON**  
Agent

**LANCE**  
& Associates  
**REAL ESTATE**

411 W Avenue C  
Hope, Arkansas  
870.777.1420  
www.lanceassociates.com

**“PEOPLE YOU KNOW, PEOPLE YOU TRUST.”**

# DINING IN HEMPSTEAD COUNTY

**Amigo Juan**  
1200 N. Hervey St.  
(870) 777-0006

**Big Jake's BBQ**  
603 W. Commerce  
(870) 777-1000

**Big Mac's Barbecue**  
2703 N Hazel  
(870) 722-8011

**Botanera La Loma**  
410 N Pine St.  
(870) 826-3087

**Brickhouse Express Cafe**  
UAHT Campus 2500 S. Main  
(870) 722-8142

**Burger King**  
1500 N. Hervey St.  
(870) 777-4028

**Chicken Express**  
1701 N Hervey St.  
(870) 292-4549

**Chinese Panda**  
509 N. Hervey St.  
(870) 722-2888

**Dairy Freeze**  
921 W. Third St.  
(870) 777-4201

**Domino's Pizza**  
1002 S. Main St.  
(870) 777-3400

**Donuts Donuts**  
1002 S Main  
(870) 210-2800

**Dos Caminos Bakery**  
112 S. Elm St.  
(870) 727-9987

**Dos Locos Gringos**  
2406 N Hervey St.  
(870) 777-3377

**El Agaves**  
510 N. Hervey St.  
(870) 722-4242

**El Rinconcito**  
1100 N Hervey St.  
(870) 722-8072

**Hebrews 11:1 Coffee Shop**  
121 S. Main St.  
(870) 722-8072

**Hiro Hiro Sushi**  
1110 N. Hervey St.  
(870) 826-3779

**Hope Donuts**  
1714 E. 3rd St.  
(870) 777-8000

**Jolly's Cafe**  
300 Conway St.  
Washington, AR  
(870) 983-2320

**KFC**  
2017 N. Hazel St.  
(870) 777-8677

**La Mangonada  
Neveria & Snacks**  
118 S Walnut  
(870) 703-9872

**McDonald's**  
1601 N. Hervey St.  
(870) 777-1928

**Melon Patch  
Restaurant**  
104 S. Elm St.  
(870) 777-8802

**Neighbors**  
1401 E. Third St.  
(870) 777-8659

**Paradise Quick Stop**  
901 W. 3rd St.  
(870) 777-9110

**Pedro's Hornet Hut**  
5456 Highway 371  
Blevins, AR  
(870) 874-1350

**Picket Fence**  
200 E 2nd St.  
(870) 722-5967

**Pizza Hut**  
305 W 3rd St.  
(870) 777-8659

**Sheba's Family Restaurant**  
1013 North Hervey St.  
(870) 777-6266

**Sonic**  
128 S. Hervey St.  
(870) 777-4205

**Southern Girls  
Bakery & Cafe**  
511 S Main St.  
(870) 292-3233

**Subway**  
417 N. Hervey  
and in Wal-Mart  
(870) 722-5500

**Sun's**  
5370 Hwy. 67 W.  
Fulton, AR  
(870) 896-2591

**Tab's**  
2101 S. Main  
Hope, AR 71801  
(870) 777-8102

**Taco Bell**  
1501 N. Hervey St.  
(870) 777-2668

**Tailgater's Burger Co.**  
101 S. Main St.  
(870) 777-4444

**Tasty Donuts**  
912 N Hervey St.  
(870) 722-5767

**Terry Powell's Grocery**  
310 E. Greenwood St.  
(870) 777-5779

**Wilma's Mexican**  
227 S Main St.  
(870) 777-8244

**Waffle House**  
1407 N. Hervey  
(870) 722-5033

**Wendy's**  
1615 N. Hervey St.  
Hope, AR  
(870) 722-5700

**William's Tavern**  
105 Carroll St.  
Washington, AR  
(870) 983-2890






## Bankers with HEART

**Hope Downtown**  
201 East Third St.  
Hope, AR 71801

**Hope North Branch**  
617 North Hervey  
Hope, AR 71801

**MyFarmers iTeller in Hope**  
2103 South Main  
Hope, AR 71801

**Live Teller Hours**  
Monday - Friday: 7:00 am - 7:00 pm  
Saturday: 8:00 am - 3:00 pm

(870) 777-2363

**MyFarmers.Bank | MEMBER FDIC**


From personal checking and loans, to large commercial projects, our team is here to help!



# ANTIQUES, BOUTIQUES, FLEA MARKETS & RETAIL

## ANTIQUES

Bob's Antiques  
113 S. Elm St.  
Hope, AR 71801  
(870) 703-2916

Elm Street Market Place  
121 S. Elm St. Hope, AR 71801  
(870) 777-9993

The Studio  
113 S. Elm St. Hope, AR 71801  
(870) 703-0039

## FLEA MARKET

Downtown Market  
112 E. 2nd St. Hope, AR 71801  
(870) 397-1964

Flying Pig Flea & Trade Days  
403 S. Phillips Dr.  
Hope, AR 71801

## RESALE

ROC Enterprises  
100 S Elm St.  
Hope, AR 71801  
(870) 777-4501

Shelley's Boutique  
104 S Main St.  
Hope, AR 71801  
(870) 331-2459

T&C Resale Shop  
301 S. Hazel St.  
Hope, AR 71801  
(870) 331-4670

## RETAIL & BOUTIQUES

Factory Connection  
906 N Hervey  
Hope AR, 71801  
(870) 777-1713

## Flavor

200 N Hervey  
Hope AR, 71801  
(870) 292 6991

## It's Fashion

529 N Hervey St.  
Hope AR, 71801  
(870) 777 6536

## LK's Closet

107 W 2nd St.  
Hope AR, 71801  
(870) 729-9432

## Martin's

914 N Hervey  
Hope AR, 71801  
(870) 777-2777

## Rae-Tays

208 S Main St.  
Hope AR, 71801  
(870) 777-6699

## Tickled Pink Boutique

112 W 2nd St.  
Hope AR, 71801  
(903) 578-1403

## Vintage Girls

107 S Main St.  
Hope AR, 71801  
(501) 416-9890



**108 WEST 3RD STREET HOPE, AR 71801**  
**(870) 777-8485**

Welcome to Hope-Hempstead County Economic Development! We specialize in assisting existing businesses to expand and getting new ones off the ground. Available to us is a wide selection of shovel-ready land and sites in various sizes, in order to meet your needs.

In addition, Hope-Hempstead County Economic Development also provides all available infrastructure for your location, including water, sewer, electricity, gas, and high-speed internet. Some of the largest industries we serve include manufacturing, agriculture, transportation, and education. We would love to speak with you!

Please contact us today!



# SEASONAL EVENTS

MAR 8-11

**KHMA PWK BIRTHDAY BASH** - 2nd annual celebration in honor of Paul W Klipsch with events taking place.

MAR 17-19

**JONQUIL FESTIVAL** - In Old Washington Historic State Park, Washington, AR. Nine miles north of Hope on U.S. Hwy. 278. Named for native wildflower in Southwest Arkansas. Information at **(870) 983-2698**.

APR 21-22

**JAMES BLACK'S BOWIE HERITAGE FESTIVAL** - Historic Washington State Park. Celebrating James Black, the bladesmith who forged the first Bowie Knife for Jim Bowie.

MAY 5

**TRAIN DAY/TRADE DAY** - In Downtown Hope at the Amtrak Depot. Celebrates the Cairo-Fulton Depot and the Stopping of the Amtrak Passenger Train. Information at **(870) 777-4444**. Trade Day is held at The Hub in alongside with Train Day. Vendors available for shopping for everyone.

AUG 10-12

**WATERMELON FESTIVAL** - Held at Hope Fair Park, Hope, AR. Food, Fun, & Festivities for all ages. Please join us for a "Seed Spitting Good Time".  
**For more information: [hopemelonfest.com](http://hopemelonfest.com), (870)777-3640, [hopemelonfest@yahoo.com](mailto:hopemelonfest@yahoo.com)**

NOV - JAN

**ICE SKATING AT THE HUB** - Downtown Hope at The HUB Thursday - Sunday specific weekends, \$5 with skates provided.

NOV 16

**CHRISTMAS OPEN HOUSE** - Downtown Hope, AR. Join us as we kick off the Christmas Season with carriage rides, shopping, dinning and more.

DEC 4

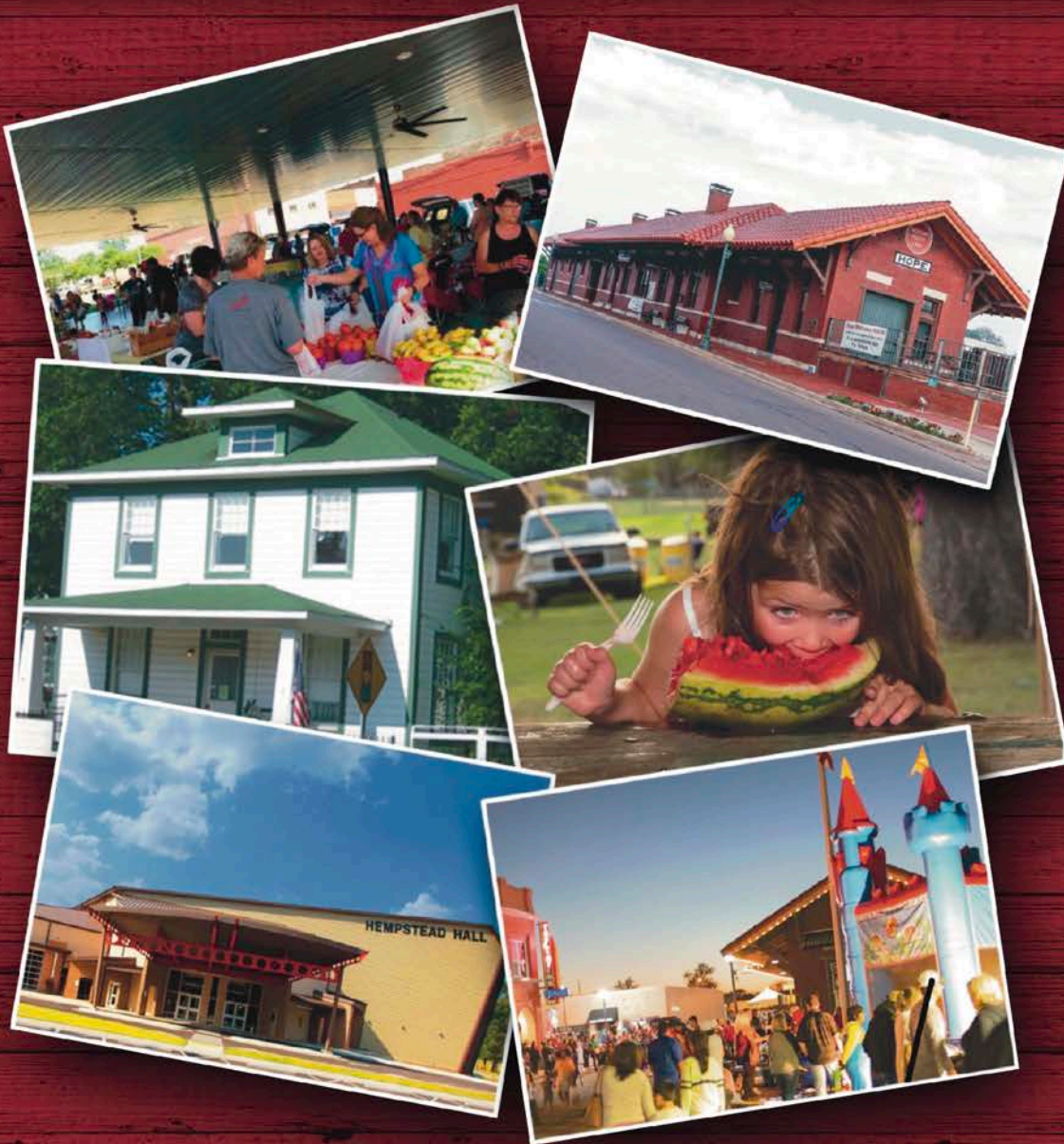
**CHRISTMAS PARADE** - from Main Street to Downtown Hope, AR. You won't want to miss this "Storybook Christmas".



**SCAN HERE** and view the Hope & Hempstead County Chamber of Commerce community calendar to find dates and times of more community events taking place this year!



**HISTORY · HOSPITALITY · HOPE · HOME**



Welcome to  
**HOPE & HEMPSTEAD COUNTY  
ARKANSAS**

This ad paid for with a combination of state funds and private regional association funds.





# HISTORIC DOWNTOWN HOPE

Historic Downtown Hope continues to make progress in business revitalization and historic preservation. Our historic district is now in its fifth year as an Arkansas Downtown Network Community under the Main Street Arkansas Program.

Locals and tourists alike enjoy shopping, dining, and spending time in downtown

Hope. Retail development plays a vital role in our revitalization effort with a little something for everyone. If you are planning a day trip to Hope or are here for an extensive visit, you definitely need to visit downtown and enjoy the delicious food from one of our downtown eateries.

Downtown Hope also offers numerous

events and activities throughout the year including Train Day/Trade Day, ice skating, KHMA Paul W Klipsch Birthday Bash, and you definitely don't want to miss Christmas in Downtown Hope! Downtown Hope also houses the Southwest Arkansas Arts Council which offers education and cultural opportunities and events.

The HUB in Pavilion Park is located in downtown Hope. The HUB is an outdoor event venue available to the community. It is the location of our Hope Farmers' Market. Also located in downtown Hope is the Visitors' Information Center, AMTRAK, and the Hope-Hempstead County Chamber of Commerce. Downtown Hope will soon have the addition of a new pocket park for the community to enjoy. Within walking distance from the heart of downtown you can visit President William Jefferson Clinton's Birthplace Home National Historic Site and the Klipsch Visitor's Center.

Come, visit, explore Downtown Hope... we can't wait to have you!

**STILL'S**  
**AUTO SERVICE**

**870.777.3281**  
**Call us today!**



**300 S Washington, Hope, AR 71801**





# CHRISTMAS IN HOPE, AR

Christmas is a magical time in Hope, Arkansas. From the sights and sounds, to the smiles and laughter from those young and old, Christmas in Hope will do wonders for your soul! It's an unforgettable time that you do not want to miss.

Each year the Hope-Hempstead County Chamber hosts "Be the Light", our downtown Christmas Tree Decorating Contest. In 2022, there were almost 50 Christmas trees decorated by local businesses and individuals and then placed downtown. The City of Hope also added several decorations, including Christmas banners, a Christmas photo opportunity at The HUB, the gorgeous Christmas tree at the Train Depot and flower beds adorned with magnificent lights and decorations. Every year, local businesses decorate their windows in conjunction with each year's Christmas theme, turning Hope into winter wonderland filled with the holiday spirit.

Christmas Open House is held the Thursday before Thanksgiving in Hope. Local businesses participate with refreshments, giveaways, and seasonal sales, bringing a healthy number of patrons to downtown Hope to enjoy shopping, dining, hot chocolate, ice skating at The Hub, complementary carriage rides, contests, and much much more!

The first Monday in December is a special day and holds very magical moments in Hope. The Annual Christmas Parade kicks off on Main Street and close to 50 entiries make their way through Downtown for parade-goers to enjoy. The 2022 Christmas theme in Hope was Christmas Around the World and the floats did a wonderful job of displaying this theme. After the Parade, everyone is invited to attend the official Christmas Tree Lighting downtown at the Train Depot where Santa Claus makes his first appearance of the season. Afterwards,



children have the opportunity to enjoy "Cookies with Santa" hosted by Junior Auxiliary of Hope, take pictures with Santa and whisper their Christmas wishes in his ear.

Christmas 2023 will be celebrated in the same fashion so make sure you join us for "A Storybook Christmas"!

## CANEY CREEK ESTATES

### MOBILE HOME PARK

1705 W. 3RD ST. | P.O. BOX 35 | HOPE, AR 71801

# 870-777-2035

**FAMILY FRIENDLY COMMUNITY & AFFORDABLE LIVING**





1601 N. Hervey | Hope, AR

## 870-777-1928

**"i'm lovin it"**







# CITY OF HOPE, ARKANSAS

## COUNTY SEAT OF HEMPSTEAD COUNTY

Emergency: Dial 911 | Hope Police Dept. (870) 777-3434 | Hope Fire Dept. (870) 777-6702

Pafford EMS: Dial 911 | Hope City Hall: (870) 777-6701 | Hope Public Works: (870) 777-8644

Parks & Recreation: (870) 777-7500 | Building Services: (870) 722-2505

The City of Hope, Arkansas is the largest city in Hempstead County and serves as its county seat of government. Hope was incorporated in 1873, and it was famously named for Hope Loughborough, a daughter of a railroad executive, when rail service was first established in the area.

According to the most recent United States Census in 2022, Hope's population was 9,425, the 42nd largest City in the State of Arkansas. Located in southwestern Arkansas directly off Interstate 30, Hope is approximately 36 miles northeast of the Texarkana metropolitan area, and it is 112 miles southwest of Little Rock, the Arkansas state capitol. Hope is also driving distance from such cities as Dallas, Texas (approximately 209 miles), Shreveport, Louisiana (103 miles), El Dorado, Arkansas (79 miles) and Monroe, Louisiana (143 miles),

The City of Hope operates under a City Manager/Board of Directors form of government. The citizens of Hope elect, within seven geographic city wards, a director representing each ward over the course of four-year staggered terms, and the Board of Directors as a group appoint the City Manager, City Attorney, and City Clerk.

The Hope City of Board of Directors serve as the City of Hope's legislative branch of City government. The Board selects one of the directors to serve as Mayor. The Mayor presides over Board meetings and serves as

the ceremonial head of the City government as well as executing contracts and other legal documents as authorized by the Board or required by law. Don Still is presently serving as Mayor of Hope.

The City Manager acts as the City of Hope's chief administrative officer, overseeing the day to day operations of municipal government and eight city departments. J.R Wilson is the current City Manager of Hope, originally appointed on 28th day of February, 2023. He formally served as Chief of Police and Assistant City Manager.

The City of Hope operates eight city departments with approximately 126 employees in service of its residents, including Administration, Building Services/ Code Enforcement, Human Resources, Fire Department, GIS/ Technology, Parks and Recreation, Police Department and Public Works.

Hope City Hall, the administrative center of Hope's city government is located at 206 W Avenue A in downtown Hope.

Both the Hope Fire Department and Hope Police Department are professional and state-accredited units. Hope enjoys an ISO Class 3 fire rating. The Hope Fire Department includes 16 professional firefighters and has two fire stations.

The City of Hope, AR also has several commissions and citizen boards, including

Planning & Zoning, Tourism, Housing Authority, and Hope Water & Light Commission.

Hope Water & Light is the city-owned and operated utility company, but it operates independently under the oversight of the Hope Water & Light Commission with its own General Manager and a separate 40-employee professional staff.

Hope, Arkansas is famously known as the hometown of William Jefferson "Bill" Clinton, the 42nd President of the United States, who also served as Governor of Arkansas from 1979 to 1981 and again from 1983 to 1992.

Hope, Arkansas is also the hometown of former Arkansas Governor Mike Huckabee, who served 44th governor of Arkansas from 1996 to 2007. Huckabee is now known as a Fox News personality as well as best selling author. Mike Huckabee also ran for President twice, losing in the GOP primaries. Huckabee's daughter, Sarah Huckabee Sanders, was born and raised in Hope, and served as White House Press Secretary during the Trump Administration and is now the current Governor of Arkansas.

Other nationally prominent citizens from Hope include Clinton's former White House Chief of Staff Mack McLarty; attorney Vincent Walker Foster, Jr.; PGA golfer Ken Duke, actress/vocalist Ketty Lester, and actress Melinda Dillon.





# HEMPSTEAD COUNTY GOVERNMENT

## HOPE SERVES AS COUNTY SEAT, HOME TO OFFICIAL OFFICES

Hempstead County Courthouse Automated switchboard: All county offices at  
(870) 777-8400

Hempstead County Public Services are headquartered in the Hempstead County Courthouse located at 200 East 3rd Street in Hope. Public offices in the county courthouse are generally open from 8 a.m. until 4 p.m. Monday through Friday. County offices generally observe all major state holidays and offices are closed on those days.

The Hempstead County Judge's Office processes all county bills, maintains county roads, the courthouse and all county buildings and property. Jerry Crane is the current County Judge and acts as the chief administrative officer of the county.

The Hempstead County Clerk is Karen M. Smith. The county clerk's office issues marriage licenses, processes the county's payroll, pays the county's bills, registers voters and conducts early and absentee voting, and distributes county and tax revenue. The office also processes adoptions, probate cases and mental commitments.

The Hempstead County Circuit Clerk is Gail Wolfenbarger. This office is in charge of all felony court filings, processing of child support, recording of deed records and

uniform commercial code filings. The office also archives all civil, criminal and juvenile court judgments.

The Hempstead County Sheriffs Office, not only enforces the law and conducts general police duties, but also serves as the county's tax collector. James Singleton is the Hempstead County Sheriff. This office is housed in and is in charge of the Hempstead County Detention Center at 312 S. Washington St., and is the county's civil process server.

The Hempstead County Tax Collector's Office is operated under the authority of the Hempstead County Sheriff's department, and is responsible for collection of personal and real property tax receipts.

The Hempstead County Treasurer's Office handles all county receipts and disbursements. The office also keeps track of the county's investments. Judy Flowers is the current County Treasurer.

The Hempstead County Assessor's Office assesses the value of all personal property in the county, all licensed property and business inventory for tax purposes. The office appraises and assesses all county

real estate. The office also keeps a file of all county real estate which includes the assessed value and legal description of each property. The current County Assessor is Kim Smith.

Offices also located at the county courthouse, include: The Hempstead County District Court responsible for all misdemeanor court filings including traffic citations, as well as felony first appearance and bond settings. The current district judge is Joe Short.

The Hempstead County Cooperative Extension Service is a branch of the University of Arkansas Cooperative Extension Service and is responsible for extension to the public of expertise in agriculture, home and family management and 4-H Club activity. Terrie James is Extension Staff Chair, and Kim Rowe is the County Extension Agent.

The Hempstead County Juvenile Intake Office is responsible for the filing and monitoring of juvenile court matters. The current juvenile intake officer is Carolyn Hawthorne.



# HEMPSTEAD COUNTY COMMUNITIES OUTSIDE HOPE, SMALL TOWNS OFFER COUNTRY LIVING & RICH HISTORY

**BLEVINS, population of 297**, serves a large rural community. The town is named after Hugh Blevins, an early settler in the 1800s. The city is located at the junction of U.S. Highway 372 and Highway 29 in Hempstead County, 14 miles north of Hope. The town mayor is currently Bobby Steed.

**FULTON, population 191**, is located off U.S. Highway 67 on State Highway 355. The town was called Point Rocky at one time, and also named Fulton on Red River. The name was changed in 1840 to simply Fulton. It was named after William Fulton, the last governor of the Arkansas Territory. The current city

government includes a town mayor, Henry Hale, and city councilmen.

**MCNAB, population 30**, is located on U.S. Highway 355. James T. Conway serves as mayor. McNab is considered the official city connected with the John W. Turk Jr., Power Plant, which was completed in 2010. The city was established 1809 and was named after Charles McNab who was a landowner in Miller County.

**MCCASKILL, population 57**, is located on U.S. Highway 371, approximately six miles west of the town of Blevins. The mayor of McCaskill is Marion Hoosier. McCaskill was

named for a family of early settlers from North Carolina. They moved into the area just before the Civil War. A brother of the McCaskill family served in the Union Army.

**OAKHAVEN, population 65**, is located northwest of Hope on State Highway 32, and was established in World War II as the officer housing community for the Southwestern Proving Grounds. Troy Lerew is the mayor.

**OZAN, population 81**, is located on U.S. Highway 278 W., about 15 miles north of Hope. Ozan comes from a French word Aux Ane, meaning "at the Ane." It was corrupted by English speakers into Ozan. Ozan was at one time a large center for cotton production. Zechariah Melson serves as the town mayor.

**PATMOS, population 58**, is located on State Highway 355, east of State Highway 29 South. Patmos is a Biblical name. The city was also considered to be named Luzon or Dura.

**PERRYTOWN, population 232**, is located about three miles east of Hope on U.S. Highway 67. The city mayor is Dave Rose. It was named after Perry Campbell, a well-known community activist and businessman for over 50 years. It is home to the Southwest Regional Office of the Arkansas Game and Fish Commission.

**SPRING HILL**, is accessible on State Highway 355 West on State Highway 29 and State Highway 174 S. It was originally known as the Spring Hill Township. It is located 12 miles east of the Red River and was named for a large water spring. Spring Hill is unincorporated.

**WASHINGTON, population 180**, is located nine miles north of Hope on U.S. Highway 278 W. It is a richly historical town, and is commonly known as Historic Washington because it is home to Historic Washington State Park. Paul Henley is the mayor of Washington and serves with four council members.



## Tyson

visit [www.tysonfoods.com/careers](http://www.tysonfoods.com/careers)

Search all job openings  
and type "Hope" in the  
search bar

Equal Opportunity Employer – Vets, Disability.





# NATIONAL HISTORIC BIRTHPLACE HOME OF FORMER PRESIDENT WILLIAM JEFFERSON CLINTON

On Aug. 19, 1946, Virginia Cassidy Blythe gave birth to her son, William Jefferson Blythe III, named for his father who was killed in an automobile accident three months before he was born. Young Billy Blythe grew up to become William Jefferson Clinton — the 42nd president of the United States. He and his mother lived with her parents in their home at 117 Hervey St. in Hope, where the future president spent the first four years of his life. Growing up in Hope, Clinton embraced the values of this small town. It was here that he learned early lessons in the importance of family, education, and racial equality — lessons that served him well in his public life and led him on a path to the nation's highest office.

The birth home was restored and

furnished with period pieces by the Clinton Birthplace Foundation, Inc. It opened to the public in 1997. President William Jefferson Clinton Birthplace Home National Historic Site (NHS) was established as a unit of the National Park Service in December 2010. The historic site includes the birthplace home, a visitor center (located in an adjacent historic home) and the Virginia Clinton Kelley Memorial Garden.

The interior of this modest home invites visitors to experience the house as Clinton did as a small child, from the stairs he hurried down on Christmas morning to the playing cards tacked to the kitchen window. President William Jefferson Clinton Birthplace Home NHS offers a glimpse into the ordinary home

that helped shape his formative years.

Former President Clinton attended the formal dedication ceremony for the historic site on April 16, 2011, along with Secretary of the Interior Ken Salazar and National Park Service Director Jon Jarvis. They were joined by more than 500 of Clinton's friends, family members, neighbors and supporters to commemorate the site's entrance into the National Park Service.

Begin Your Tour at the Visitor Center, located in an adjacent historic home, which includes interpretive exhibits about President Clinton's early life in Arkansas and a bookstore. Tours of the birthplace home are offered every half hour, with the last tour leaving at 4 p.m. Admission is free.



**Southern  
Tire Mart**

**Your Family's #1 Tire Store**  
**1515 West 3rd St**  
**Hope, AR 71801**  
**Stmtires.com | 870-777-2385**



**2301 S Main St, Hope, AR**  
**(870) 777-3330**  
**Home, Hunting, Shooting, FISHING,**  
**Hunting Outerwear, WEEKLY DEALS!**



# HEMPSTEAD COUNTY CHURCH LISTING

## **ASSEMBLY OF GOD**

First Assembly of God  
322 N. Main St., Hope AR  
870-777-4357

Word of Grace  
Pastor Carroll Bryant Jr.  
2909 Hwy 278 E., Hope, AR  
870-777-9668

## **BAPTIST**

Anderson Baptist Springhill, AR  
Pastor Wayne Warlick  
214 Hempstead 7, Hope, AR  
870-777-5993

Antioch Missionary Baptist  
Pastor Elmer Grant  
799 Hwy 332, Hope AR

Bethany Baptist Springhill, AR  
Eric Fisher  
589 Hwy. 355 W., Hope, AR  
870-777-2044

Bodcaw #1 Baptist Church  
Pastor Lane Garner  
351 Nevada County 13, Emmet, AR  
870-722-1972

Calvary Baptist Church  
Gary Johnson  
1301 West Ave. B, Hope, AR  
870-777-4650

Charity Missionary Baptist Church  
Rev. Jessie Henry  
5210 Hwy. 67 West, Fulton, AR  
870-896-2670

Columbus Baptist Church  
Pastor William Nutt  
Hwy 73 West, Columbus  
870-777-5368

Eastside Baptist Church  
Pastor Billy Porter  
1101 N. Bonner St., Hope AR  
870-777-8484

Emmanuel Baptist Church  
Pastor Otis McKamie  
216 Andres St., Hope AR

First Baptist Church  
Pastor Daniel Bramlett  
315 South Main St., Hope AR  
870-777-5757

Washington Baptist Church  
Pastor Robert E. Nichols  
105 SE Jay St. Washington, AR

Fulton Union Baptist Church  
201 Hempstead St., Fulton, AR  
870-896-2597

Greater Camp Springs Baptist Church  
Pastor Kendric Burns  
913 Yellow Creek Rd.  
870-983-2949

Garrett Chapel Missionary Baptist Church  
Pastor Anthony Mullens  
104 S. Ferguson St. Hope, AR  
870-777-4001

Garrett Memorial Baptist Church  
Pastor Cliff Johnson  
#1 Genesis Drive, Hope, AR  
870-777-3256

Grace Baptist Church  
Pastor Curtis Bobo  
4100 East Third Street, Hope, AR  
870-777-2792

Greater Hope Missionary Baptist Church  
Pastor Bennie Kingsby  
1201 West 3rd Street, Hope, AR  
870-777-6957

Greater St. Luke Baptist Church  
Pastor Cecil Flenory  
3945 Hwy. 67 West, Hope, AR  
870-777-9314

Guernsey Baptist Church  
Pastor Jake Vandenburg  
4284 Hempstead 2 Hope, AR  
870-777-8405

Harvest Baptist Church  
430 Hwy 73 West Hope, AR

Haynes Chapel Baptist Church  
Pastor Frankie B. Mitchell  
300 Hwy 32 East, Hope, AR  
870-777-8487

Landmark Missionary Baptist Church  
Glen Ridings  
412 Bill Clinton Drive, Hope, AR  
870-331-4292

Lonoke Missionary Baptist Church  
Rev. Alvin L. Hunter  
702 South Hazel, Hope, AR  
870-777-6467

Macedonia Missionary Baptist Church  
Rev. Harold Massey  
2333 Hwy 73 West, Columbus, AR  
870-983-2718

Malbrook Baptist Church  
Pastor David Blasé  
1456 Hwy 195 North, Blevins, AR  
870-874-2568

Mt. Cannon Baptist Church  
Pastor E.D. Lonnie  
804 Shearman St., Hope, AR

Mt. Hebron Baptist Church  
Pastor Jeremiah Hardamon  
295 County Road 1040, Hope, AR

Mt. Nebo Baptist Church  
Pastor Bruce Porter  
1197 Hempstead 57, Hope, AR

Mt. Olive Baptist Church  
Pastor Calvin Turner  
149 Hempstead County 246  
Hope, AR

New Bethel Baptist Church  
482 Hempstead County 132  
Hope, Arkansas

New Hope Missionary Baptist Church  
Pastor Neal Ridling  
3725 Hwy 278 West, Hope, AR

Pleasant Springs Baptist Church  
4604 Hwy 371  
McCaskill, Arkansas

Providence BMA Church  
Pastor Casey Curtis  
5770 Hwy 29 S., Hope, AR  
870-777-6299

Providence Memorial Baptist Church  
7102 Hwy 67 East, Perrytown  
870-777-5155

Providence Full Gospel Missionary Baptist  
Church  
Pastor J.L. Jones  
3576 Hwy 278N, Hope, AR

Rising Star Baptist Church  
Pastor James E. Lister  
1002 East Beech, Hope AR  
870-777-5246

Riverside Baptist  
Pastor Larry Byers  
384 Hillcrest Rd Fulton, AR

Shover Springs Baptist Church  
Pastor Eric Barbaree  
110 Hempstead County 54, Hope AR  
870-777-2919

Southside Baptist Church  
Pastor Ernie Sorrells  
2805 South Main St., Hope AR  
870-777-6272

Saint John Baptist Church  
Pastor Dienco Muldrew  
1000 North Greening, Hope, AR  
870-777-6714

St. John Baptist  
Pastor Robert G. Nance Jr.  
Hwy 195, Deann, AR

St. Luke #2 Missionary Baptist  
Pastor James Conway  
5296 Hempstead County 2  
870-777-8835

Tabernacle Baptist Church  
Pastor Larry Brown  
1707 Hwy 174 S

Union Grove Missionary Baptist Church  
Pastor Donald Thompson  
546 Hwy 195, Blevins, AR  
870-874-2626

Unity Baptist Church  
Pastor Nick Flowers  
402 Hervey Street, Hope, AR  
870-777-4078

Victory Baptist  
Pastor Toby Bane  
2510 Springhill Rd.  
870-397-3344

White Oak Grove Missionary Baptist  
Pastor John Nations  
300 Hwy 332E  
Deann, AR

## **CATHOLIC**

Omega Gospel Ministries  
2211 East 3rd Street, Hope, AR

Our Lady of Good Hope  
Pastor C. Kambala  
301 South Walker Street, Hope, AR  
870-777-3202

## **CHRISTIAN**

First Christian Disciples of Christ  
Pastor Les Patterson  
102 West Ave B Hope, AR  
870-777-2594

United Christian Church of Emmet  
Pastor Wanda Bullock  
407 West 4th Street, Emmet, AR

Spring Hill Christian Church  
Pastor Revel Kidd  
605 Hwy 299, Springhill, AR

Oak Grove Church  
Pastor Revel Kidd  
450 Hempstead County 54  
Hope, AR

- Continues on page 21

**CHURCH OF CHRIST**

Central Church of Christ  
Minister Harold Freeman  
5707 Hwy 29 South, Hope, AR  
870-777-3599

Eastside Church of Christ  
410 North Cedar St. Hope, AR

Hope Church of Christ  
Minister Barry Haynes  
1815 East Third Street, Hope, AR

**EPISCOPAL**

St. Mark's Episcopal Church  
301 South Elm Street, Hope, AR  
870-777-3297

**JEHOVAH'S WITNESS**

Kingdom Hall of Jehovah's Witness  
1709 North Hazel St., Hope, AR  
870-777-5798

**METHODIST**

Avery Chapel United Methodist  
661 Hempstead County 29 McCaskill, AR

Beebe Memorial C.M.E  
Pastor Monette Shaw  
412 North Hazel St., Hope AR  
870-777-2112

Bethel AME  
Pastor Thurston B Lamb  
418 South Laurel St., Hope, AR  
870-777-9376

Bingen United Methodist  
Pastor Jim Polk  
434 Hempstead 27, Bingen, AR

Bruce Memorial United Methodist  
Pastor Joe Miller  
5210 Hwy 371 N., Blevins, AR

Deann United Methodist  
Pastor Gary Riley  
117 Hwy 195 North, Deann, AR

First United Methodist  
2300 South Main St., Hope, AR  
Pastor Steve Johnson  
870-777-8816

Friendship United Methodist  
Pastor Gene Ross  
4688 Hwy 195 N., McCaskill, AR

Hinton United Methodist  
Gary Riley  
1518 Hwy 355E, Patmos, AR

Mt. Pleasant C.M.E  
Pastor Martha Benton  
518 East 28th Street, Hope, AR  
870-777-2690

Mt. Zion C.M.E.  
Pastor Don White  
819 East Hickory St., Hope, AR  
870-777-1722

Shorter Chapel A.M.E.  
Pastor John L. Bates  
5809 Hwy 29 N. Blevins, AR

St. John United Methodist  
Pastor Danny Dunlap  
814 North Hervey St., Hope AR  
870-777-2570

St. Luke C.M.E.  
Pastor Earl Jones  
6518 Hwy 278 North, Ozan, AR

Washington Methodist  
Pastor Keenan Williams  
124 Hwy 195 South, Washington, AR  
870-777-3111

**MORMON**

The Church of Jesus Christ Of Latter-Day  
Saints  
Pastor Stephen French  
3069 Hwy. 29 N., Hope, AR  
870-777-8453

**NAZARENE**

Apostolic Holiness  
Pastor Steven Higgason  
317 West 23rd St., Hope, AR  
870-826-6455

Bell Chapel Church of the Nazarene  
Pastor Jack McAllister  
5803 Hwy 371 N. Blevins, AR  
870-874-2272

Church of the Nazarene  
Pastor Vilma Ricardo Espinoza  
212 S. Walnut, Hope, AR  
870-722-2889

First Church of the Nazarene  
Pastor Gerald Matthew  
909 Rosston Rd., Hope, AR  
870-777-2255

**PENTECOSTAL**

Church of God in Christ  
Washington Temple  
Pastor B. Washington  
808 S. Edgewood St., Hope, AR  
870-777-4192

Faith Temple COGIC  
Pastor Kenneth Tidwell  
814 West Ave. B, Hope, AR  
870-722-6074

First Church of God  
Pastor Jacob Brown  
713 N. Laurel Street, Hope, AR  
870-777-3679

First Pentecostal Church of God  
Pastor Robert Barns  
601 West 5th St., Hope, AR  
870-777-9006

Hendrix Memorial Church of  
God in Christ  
Pastor Maurice Williams  
409 S. Main St., Blevins, AR  
870-767-4595

House of Praise Pentecostal  
Church of God  
Pastor G. Grinder  
601 West 5th St., Hope, AR  
870-777-9006

New Life Church  
Pastor Craig Adams  
4205 E. 3rd, Hope, AR  
870-777-1114

Pentecostal Temple Church  
Of God in Christ  
Pastor Fred I. Coleman  
901 Bell St. Hope, AR

**PRESBYTERIAN**

First Presbyterian  
Pastor Kathleen Hignight  
701 S. Main St.  
870-777-3233

Roadside Church of God in Christ  
Pastor Theodore Marks  
Hwy 278 Ozan, AR  
870-983-2606

**NONDENOMINATIONAL**

A Place of Meeting  
Pastor Nathaniel Crane  
7302 Hwy 67 East, Perrytown, AR  
870-777-2972

Hope Community  
2110 Rocky Mound Rd., Hope, AR  
870-777-1508

Living Water Fellowship  
2985 Hwy 29 N. Hope, AR

New Hope Apostolic  
Pastor Elliott Bosh  
713 S. Grady St., Hope, AR  
870-777-5796

New Testament House of Prayer  
Pastor Otha Hill  
257 Hempstead 177, Hope, AR  
870-777-4022

Old Liberty Community Church  
Pastor Charles Hawley  
120 Hempstead County 10

Renewed Faith Christian Center  
Pastor Brain Faulk  
600 Oak St., Hope, AR  
870-777-6771

Straight & Arrow Path  
Pastor Billy Williams  
513 S. Elm St., Hope, AR  
870-722-9991

Quakers  
870-777-5382

The Supreme Council of The House of Jacob  
Pastor Simeon Ams  
617 E. Ave H, Hope, AR

Unlimited Outreach Ministry  
Pastor Gary Jones  
3177 Hwy 32 N. Hope, AR

Word of Faith  
Pastor Lee Little  
5898 Hwy 29 N. Hope, AR  
870-874-3327

Rafter J Cowboy Church  
Pastor Terry Evans  
4913 Hwy 29 S. Hope, AR  
870-703-4203

Southside Assembly  
Pastor Jeff Smith  
1121 Spring Hill Rd.

Church of God of Prophecy  
Hope Family Church C.O.G.O.P.  
Pastors Jeff & Pam Smith

Iglesia de Cristo  
1900 East Hempstead St.  
870-729-9411





Photo by Rodney G. Steele

# HOPE WATERMELON FESTIVAL

## REGIONS PREMIERE EVENT, ATTRACTS THOUSANDS ANNUALLY

Summer in Hope, Arkansas offers one of the premier festivals in the state, the Hope Watermelon Festival. Watermelons have long been the calling card for the City of Hope and giant watermelons are a theme that remains unmatched in Arkansas since 1926. The Hope-Hempstead County Chamber of Commerce organizes the festival the second weekend of August annually which brings as many as 50,000 visitors to Hope Fair Park.

The festival itself dates back to the mid-1920's when the city's Chamber of Commerce staged a one-day Festival each year. The early Watermelon Festivals bear little resemblance to the recent ones. During the 1920's-era festivals, citizens served ice-cold watermelon to passengers on the many trains which stopped in Hope. The festival also featured a "Watermelon Queen" pageant and a large parade. These early festivals brought upwards of 20,000 people in a day to Hope. The end to the first festivals came about 1931 when the city, suffering from the effects of the depression, could no longer accommodate the crowds.

When Hope celebrated its centennial in 1975, the event was such a rousing success local residents started thinking about another celebration. Local promoter and newspaper man C.M. "Pod" Rogers organized a new Watermelon Festival in 1977. The success of this first reorganized festival led to the event gaining annual status. Since the 1970's, the festival has continued to grow,

attracting approximately 20,000 visitors to Hope over a three-day period.

The present-day Hope Watermelon festival features numerous activities including arts & crafts, food, entertainment and other family-oriented activities. Local civic clubs hold dinners featuring such down-home fare as locally grown smoked chicken and golden fried catfish. What else can you do at the festival? You can participate in a 5-k race, participate in Watermelon Olympics, enter the "Watermelon Idol" talent contest, browse the car show, and have a blast in the Kidz Zone. Nearly 150 Arts and Crafts booths will be set up at the festival grounds.

Returning this year are the Watermelon Olympics an event that pits local teams against each other in events such as the melon-toss. You may also enjoy an antique engine show featuring old steam engines. The festival also features a number of melon-oriented events like the seed-spitting contest and the Politically Correct Watermelon eating contest.

And what of the famous Hope melons? Those attending will be able to see some of the bigger melons of the year, some tipping the scales at close to 200 pounds. Ice-cold watermelon will be sold by the slice each day and numerous melon growers will have whole melons on sale for visitors to take home. Three generations of the Bright family have contributed to bringing Guinness Book of World Records honors for watermelon

growing to Hope and the festival. The late Ivan Bright raised the first world record melon for the festival in 1979. Bright's grandson, Jason, returned the record to Hope in 1985, and Jason's dad, Lloyd, grew a third world record melon in 2005.

The festival has been a favorite stop of Hope native and former President Bill Clinton, as well as former Governor Mike Huckabee, also a Hope native. The Present Arkansas Governor Sarah Huckabee Sanders made an appearance at the 2022 Hope Watermelon Festival during her campaign efforts. The event also regularly attracts a host of Arkansas state elected officials, Congressmen, Senators and political figures every year which is why the Politically Correct Watermelon Eating Contest is such a huge hit.

Lastly, you will not want to miss Saturday night's big finale as the festival brings top popular music to Hope, AR. Some of these legendary music performers include the late Country legend Patsy Montana, Charlie Daniels, Tanya Tucker, Lori Morgan, and Toby Keith. More recent years have seen acts like the Oak Ridge Boys, Mickey Gilley and Johnny Lee, Diamond Rio, Phil Vasser, and our 2022 headliner, Uncle Kracker.

This year's festival will be held August 10-12, 2023. So, mark your calendars and make plans to attend the 47th Annual Hope Watermelon Festival!





# AMTRAK DEPOT & VISITORS CENTER

## DAILY AMTRAKS STOPS, EXHIBITION OF HOPE HISTORY

After a 36-year absence, passenger rail service returned to Hope in 2013 with the inauguration of two daily Amtrak stops.

Amtrak runs two passenger trains daily, with Train 21 departing at 5:09 a.m., traveling west, and Train 22 departing at 9:18 p.m., going east, according to the official schedule. That makes the Hope connection part of the national schedule, allowing passengers embarking from Hope to travel to major Amtrak destinations nationwide.

Boarding in Hope is at the Amtrak depot in the Hope Visitor and Information Center at the intersection of Division and Main streets, and taxi service is available in town. At present, Amtrak tickets must be purchased at [amtrak.com](http://amtrak.com) online.

Since 1912, the Union-Pacific Railroad has been a major part of Hope, and helped bring

Hope to life as it has so many other small towns in America. The railroad has shared its part of history, helping to bring presidential and vice-presidential candidates to Hope to stop and campaign, as well as famous musicians such as Duke Ellington, Count Basie, and the King himself, Elvis Presley.

Although, as the interstate highway system developed and improved in efficiency as well as the automobile becoming more affordable, safe, and available, the railroad in Hope gradually saw a decrease in the use of passenger trains. In 1971, the last official passenger train passed through Hope. The railroad continued to be used by freight trains and the depot was used as an office building until 1994 when it was closed.

In 1996, the City of Hope acquired the depot from the railroad company, and decided to use

it as a starting point for the increasing number of tourists who were showing interest in Hope.

The Visitor Information Center, itself, showcases a significant exhibition of Hope history, including the early childhood of Hope native, former President Bill Clinton. In 2008, the VIC also acquired exhibit materials from the formative years of another former governor of Arkansas, Mike Huckabee.

The VIC also showcases special exhibits of the Department of Arkansas Heritage from time to time, and has an extensive collection of railroad memorabilia and history associated with the development of Hope.

The VIC is operated by the City of Hope Tourism Commission, with hours from 8:30 a.m. to 5 p.m., Monday through Friday, 9 a.m. to 5 p.m. Saturday, and 1 to 4 p.m. on Sundays.



**870.777.4567**



**Holiday Inn  
Express®**

**870.722.6262**

**ALL HOPE LOCATIONS NORTH OF  
I-30, OFF OF N. HERVEY ST.**

**— WELCOME TO HOPE! —**



# KLIPSCH HERITAGE MUSEUM ASSOCIATION, INC.

The original Klipsch & Associates museum was in operation before 1978 and was established by Paul W. Klipsch (PWK), and included items he made, bought at auction or was given. In 1979, Jim Hunter became the company Historian and remained until his retirement at the end of 2016. During the last year of Hunter's tenure, it became clear to Klipsch Group, Inc. (the successor to Klipsch & Associates) that no one else in the company would have the time nor the inclination to carry it forward, so the concept of a non-profit organization came up. In short time there was a volunteer working group that transformed into an Executive Committee, followed by a Board of Trustees and the KHMA was

incorporated in the State of Arkansas on June 7, 2016 as a 501c3 charity. Creation of ByLaws, policies, and procedures were completed in 2016 and the Museum opened to the public on July 12, 2017.

The main Klipsch Heritage Museum Assoc., Inc. mission, is to restore, preserve, maintain and display Klipsch and Klipsch-related artifacts and archival materials for historic purposes, as well as to conduct historical research and to host educational activities and events.

The Association currently oversees the Paul W. Klipsch library of technical journals, 5948 issues, over 400 reel to reel tape recordings, 60 feet thick of Paul W. Klipsch paper files,

files consisting of literature, advertisements, newsletters and other materials used for marketing. Over 10,000 photos and slides and 1000+ museum artifacts have been cataloged as well.

Jim Hunter began work at Klipsch & Associates in the fall of 1978 as a transducer engineer. Over the next 38 years he held the positions of Transducer Engineer, Production Engineer, Design Engineering Manager, Project Manager, VP of Design Engineering, and unofficial company historian. PWK's collection of audio artifacts housed in a conference room immediately caught Jim's "collector attention" and as PWK would say, "That was like waving a bull in front of a red flag!" Jim put the collection on steroids, as well as "sat before the master" innumerable times to absorb the man's colorful history spanning five distinct careers. He was also given free access to PWK's personal files dating to WWII.

The Paul W. Klipsch museum is located at 136 Hempstead 278, in Hope. In addition, there are three other locations in Hope. The Hope Airport "Steam Generating Building" from the WWII proving grounds days has been leased, and is the home of the museum's education center and PWK's library. In March of this year, the Klipsch Visitors Center opened its doors to the public. The large historic house now known as the Klipsch Visitors Center is strategically located next door to the Clinton Birthplace Home National Historic Site. Visitors and locals alike will enjoy stepping inside a powerful piece of history that pays homage to Paul W. Klipsch, an American engineer and high fidelity audio pioneer.

For more information about the Paul W. Klipsch museum, visit their website at [www.klipschmuseum.org](http://www.klipschmuseum.org), or contact their email [info@klipschmuseum.org](mailto:info@klipschmuseum.org), or to reach someone in person, call 833-794-5287. You may also visit their facebook page @klipschmuseum.

## YOUR LOCAL HVAC EXPERTS.

WE CARE ABOUT  
YOUR HOME  
COMFORT.

---

If your home's heating or  
cooling system isn't working  
like it should, we can help!

**WORK WITH US**  
501.960.8971



**YATES MAINTENANCE**  
— HEATING & AIR —



<https://yatesmaintenance.com/>





# HOPE PARKS & RECREATION

PLAYGROUNDS, SPORTS, EVENT VENUES AND MORE



Located in the southwest part of town, Fair Park is one of three parks in the City of Hope parks system. The first property was acquired in October 1908 for \$1,600. This was 40 acres from Mr. J. Hanegan. Since then, an additional 146+ acres has been added to Fair Park, giving a total area of almost 190 acres.

**The Coliseum and Arena** are facilities owned by the Southwest Arkansas District Fair and Rodeo and rented by the City of Hope during the times not occupied by the Fair.

**Softball/Baseball Fields-** Kelly #1, #2, and #3 at the Fair Park are softball-only fields. Kiwanis #1, #2, #3, Legion Field, and Harry Hawthorne Field (T-ball,) located at the Fair Park, are baseball-only fields. K-Park and Millennium Field at Fair Park and the Northside Park field are combination softball and baseball.

**The Mike and Janet Huckabee Lake** was built in cooperation with the Arkansas Game and Fish Commission. The 11-acre lake complex features a concrete walking trail completely around the rim of the lake, several handicapped-accessible fishing piers, concrete lined shores, and boat ramp. The lake is divided into two sections. The main part is 10.2 acres and the smaller section is a 1 acre derby pond that can be cut off from the main lake for fishing derbys. It is located in Fair Park.

**The City of Hope RV Park**, located within Fair Park, currently has about 200 30 amp electric hookups with water. There are 20 full hookups (electric/water/sewer) for the monthly renters. Contact the Hope Parks and Recreation for rental information.

**The Swimming Pool**, located in Fair Park, is typically open for the season around Memorial Day and closes around Labor Day.

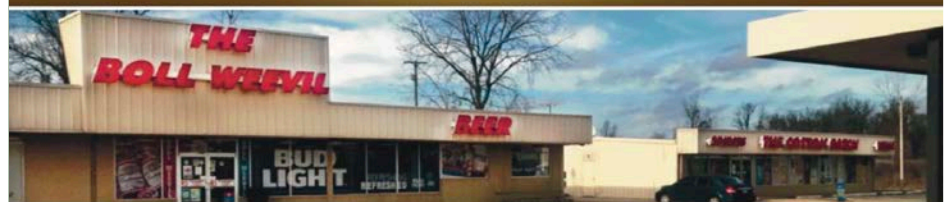
**Pavilions and Stages:** 3 Pavilions are for rent and 1 pavilion that is first come/first serve inside the Fair Park. Additionally, there are also two stages: the BancorpSouth Stage is the only one rented, whereas the CMC Stage is typically used for large events only. Call the Fair Park office for reservations. Fair Park has several other facilities, including two playgrounds, 3 tennis courts, basketball court, and a 9-hole Disc Golf Course starting at the swimming pool parking lot.

**Northside Park** began in December 30, 1949, with 16 acres of land acquired from the Hope Civic Improvement Association, Inc. Additional lands have been purchased/donated since, giving a total area of almost 25 acres. This park has several facilities, including a baseball/ softball field, playground, basketball courts, and 3 pavilions. The Northside Park Community Center is available to rent.

**The City of Hope Soccer Complex** is located on State Hwy. 174 South (Spring Hill Drive) just past the intersection with West 16th Street. This facility includes four lighted soccer fields, a skateboard park, pavilion, bathrooms, and concession stand. A couple of the fields are also used for youth football.

## Boll Weevil & Cotton Patch

Your Best & Closest Choices to Hope for Beer, Wine & Spirits



Boll Weevil: 870-896-2337 (Beer)

Cotton Patch: 870-896-2222

Just Across the Red River Bridge on Hwy 67 S. in Fulton





# HEMPSTEAD COUNTY OUTDOORS

## OUTSIDE OF HOPE, COUNTRY LIVING & RECREATION ABUNDANT

Photo by Dillan Kelsey

### MILLWOOD STATE PARK

One of the best lakes in the state of Arkansas sits in Hempstead County's backyard, making Millwood Lake a "tree-filled" fishing haven. Famous for bass tournaments, this 29,260-acre lake abounds in largemouth, catfish and crap-pie. Many trophy fish of over 10 pounds have been recorded, and 4 and 5 pound catches are common. Spring and fall offer anglers great crappie fishing here, and catfish and bream fishing in summer. Facilities include 116 campsites: (113 including Preferred B, Standard B and three tent sites), picnic sites, a standard pavilion, self-guided nature trail and bicycle trail.

A marina offers souvenirs, gift items, groceries, bait, gas, fishing boats, canoes, pedal boats and hydro bikes. Slip rentals are available year round. Marina: (870) 898-5334.

From junction 1-30 and U.S. 71 at Texarkana, travel 16 miles north on U.S. 71 to Ashdown, then go nine miles east on Ark. 32 to the park. Hunting is allowed in some areas around the lake, but not within 300 yards of any developed recreation area or structure, including dams and levees. Duck blinds are permitted but must be temporary and removed within one week at the end of the season. No permit is required.

PAGE 26

In addition to the lake, an 824-acre park is located on Millwood Lake. Each site has a picnic table and grill, and modern bathhouse with hot showers are located throughout the campgrounds. Campsites with no hookups are available. A trailer sanitary station is nearby. Contact: Millwood State Park Visitor Center: (870) 898-2800 - Marina: (870) 898-5334.

### HUCKABEE LAKES

The Mike and Janet Huckabee Lake continues to be significant for numerous years, which is located in Hope at Fair Park. The 30 million-gallon, 11-acre lake is nestled in a wooded area on a 15 acre site and is divided into two separate pools. The larger pool has an island and the lake boasts a boat ramp along with 10 wooden fishing piers scattered around the lake's perimeter. The Lake also features a walking/running path just under a mile in length around both pools on top of the levy which will be lighted in the near future to allow both fishing and strolling at night. A number of fishing derbys for the youth are held at the lake as well as fishing classes run by the city and state game commission annually. Contact: 870-777-7500.

### SITZES/BOIS D'ARC WMA

Lester Sitzes III/Bois D'arc is located in Hempstead County, 16 miles south of Hope. This 13,626-acre area is composed of 5866 acres of State owned land and 7760 acres leased from International Paper and Potlatch timber companies. The area was established as a WMA in 1950's, The primary objective of this management area is to provide quality wildlife habitat and public hunting opportunities. The area consists primarily of bottomland hardwood habitats. This includes a 660 acre Greentree waterfowl area.

The lake went under reconstruction several years ago and is nearly back to normal levels. The lake had non-game fish removed and is being restocked with bass, blue gill, red ear, channel catfish and crappie. The Little Grassy Duck Area is a 150 acre moist-soil management unit. A system of levees and water control structures facilitate inundating the area for waterfowl habitat.

A forest management system provides excellent wildlife habitat. Bois d' Arc Lake and the associated creeks and sloughs are also home to the American alligator. To get there take Hwy. 29 S out of Hope approximately

Continues on Page 27 >





Photo by Dillan Kelsey

6 miles, take Hwy. 355 west toward Spring Hill, then follow Hwy. 355 into the area.

The west side of the area can be accessed from Hwy. 67 west of Hope. Hunting includes waterfowl, deer, quail, turkey, squirrel, and rabbits. See current regulations for seasons and permit requirements. Primitive camp sites are available around the lake and on the west side of the WMA.

Red Slough Waterfowl Rest Area closes to access early part of November and will reopen to access in mid February. It is open to archery deer hunting in the months of

October to November.

Dr. Lester Sitzes III Bois D'Arc Lake is closed to hunting (fishing and non-hunting activities are allowed).

Boats are not allowed on the greentree waterfowl area 14 days before waterfowl season opens. Boat motors larger than 25 horsepower and airboats may not be used (except for Dr. Lester Sitzes III Bois d'Arc Lake). Boats are not allowed from 1 p.m.- 4 a.m. during duck season (including opening days of season segments), except on Dr. Lester Sitzes III Bois d'Arc Lake. Nonresident

waterfowl hunters need a Nonresident Wildlife Management Area Waterfowl Hunting Permit. Boat ramps are located on Bois d'Arc Lake at Kidds Landing and Hatfield Landing.

For district information Contact: Jeffrey Taverner, Private Lands Biologist Wildfire Management Division (Office) - 870-777-5580, (Mobile) 870- 331-7653, (Fax) 870-777-3032.

#### GRANDVIEW WMA

The Rick Evans Grandview Prairie Wildlife Management Area and Education Center is located in Hempstead County, two miles north of Columbus. Contact: 1-877-777-5580 This 4,885 acre multi-use area is owned by the Arkansas Game and Fish Commission and was established in 1997.

Prior to state control the site was both a cattle ranch and a hunting preserve. This multi-use area is managed for the protection, enhancement, and restoration of the blackland prairie. The area also consists of two lakes 30 and 77 acres in size. A specially stocked pond is reserved for fisherman aged 16-65. Grandview is home to a larger number of birds and other wildlife. Grandview Prairie represents the largest, contiguous tract of blackland prairie in public ownership in the nation. Deer, small game, and furbearers can be hunted.

The area is known for it's high quality white-tailed deer herd. See current regulations for seasons and permit requirements. It is unlawful to take or attempt to take water-fowl or to guide waterfowl hunters on Bayou Meto WMA without first obtaining a free Bayou Meto Wildlife Management Area Waterfowl Hunting and Guiding Permit which must be signed and in possession while hunting or guiding hunters.

For more hunting season dates and outdoor information in Southwest Arkansas, log on to [www.agfc.com](http://www.agfc.com)







SHOES, CLOTHING,  
ACCESSORIES, GIFTS  
& MORE - SOMETHING  
FOR EVERYONE!







**SWARK.TODAY**  
Southwest Arkansas Today

Visit our website  
[www.swark.today](http://www.swark.today)



**LIKE AND  
SUBSCRIBE**



**LOCAL  
NEWS  
AND  
SPORTS**







Wadley Regional Medical Center at Hope (Wadley-Hope) has been serving the people of Hempstead County and the surrounding region for many years.

Offering a wide array of both inpatient and outpatient services, the staff is dedicated to providing the best possible care to their patients. Offering care for all ages, Wadley-Hope has a 24-hour emergency room; full lab capabilities; diagnostic imaging procedures including MRI, CT Scan, general X-Ray, screening mammography and dexascan for osteoporosis screening; physical therapy and respiratory services.

Also available is a geriatric inpatient behavioral health unit, Golden Care, that provides services to those 55 and older. Wadley-Hope is conveniently located at 2001 South Main Street and is licensed for 79 beds. It is a Medicare approved facility and

accredited by DNV Healthcare, the only hospital accreditation program approved by the US Centers for Medicare and Medicaid Services (CMS) that integrates the ISO 9001 Quality Management System with the Medicare Conditions of Participation (CoP).

Customer service is the foundation for the care provided at Wadley-Hope. Taking care of not only the physical needs of the patients, but also the social needs is paramount. Meeting the needs of the patients' family members is an integral part of the care given. Assisting the hospital is a small group of faithful volunteers who give of their time and support to operate the Wadley Gift Shop, open to visitors and staff members.

Wadley-Hope is a major employer in the city of Hope and continually seeks ways to be a good community partner. Contributing the overall

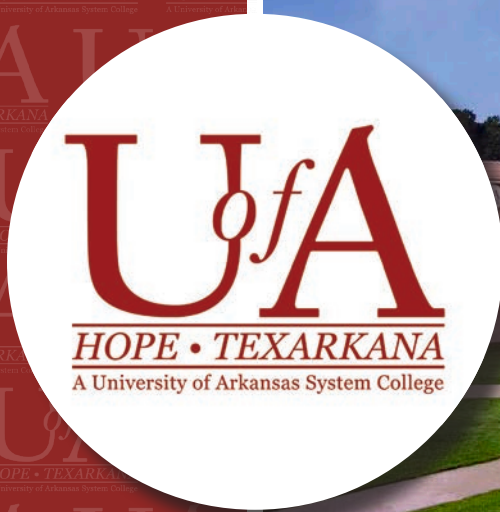
economy of the region through salaries, benefits and taxes paid, the hospital also provides a significant amount of uncompensated care while sponsoring and participating in local health fairs and community events.

In an effort to increase access to primary care services, the Wadley Rural Health Clinic is conveniently located near the hospital. The clinic is staffed by two family practice physicians and a nurse practitioner. The Rural Health Clinic is accepting new Medicare and Medicaid patients. Family Medicine Specialists is another primary care clinic associated with Wadley-Hope and is staffed by a family practice physician and two nurse practitioners.

Serving the community for many years, this practice accepts new patients as well as working with local businesses to address their needs.

Wadley at Hope is associated with Wadley Regional Medical Center in Texarkana, Texas, just 30 miles down 1-30 West. When extended care is needed, patients have access to specialty services such as Texarkana's first designated stroke center, experienced maternity care, a dual state designated Level III Trauma Center, surgical services and cardiac services through Wadley Regional Medical Center in Texarkana.

An advertisement for Heather Manor Nursing &amp; Rehab. The background is a teal color with a white hexagonal shape in the center containing the text "Heather MANOR Nursing &amp; Rehab". Below this, the address "400 W 23RD ST. HOPE, AR. 71801" and phone number "870-777-3448" are listed. At the bottom, it says "24 HOUR SKILLED FACILITY IN A COUNTRY ATMOSPHERE. LOCATED WITHIN MINUTES FROM OUR LOCAL HOSPITAL". The advertisement is flanked by two images: on the left, a healthcare professional attending to an elderly patient in a bed; on the right, a healthcare professional talking to a patient who is sitting up in bed.



The University of Arkansas Hope-Texarkana, also known as UAHT, has served students and the community for almost 60 years. From our humble beginnings as Red River Vocational-Technical School in 1965, UAHT now serves over 3,000 students each year on campuses in Hope, Texarkana, Historic Washington, Arkansas, and online. UAHT offers 40 certificate programs, 21 associate degrees, early college programs, community education courses, and business and industry training.

At UAHT, we have something for everyone from cradle to career. Starting with youth summer enrichment programs such as Kids' College, Engineering & Manufacturing Camp of Creativity, and Camp-Save-A-Life. These programs introduce children to college by offering fun, interactive classes of all sorts including STEM and healthcare classes.

If you're a high school student looking to get a head start on college or a career, UAHT offers several options for you. The Hope High and Arkansas High Collegiate Academies offer students the opportunity to take classes on our campuses and graduate high school with an Associate of Arts Degree. UAHT's secondary career and technical education center offers high school juniors and seniors the opportunity to complete a college certificate in HVAC, Industrial Technology, Coding, Certified Nursing Assistant, Emergency Medical Technician, and Welding Technology while still in high school. UAHT also offers concurrent credit courses, so if you want to get a head start on college, we can help you do that too.

Maybe you're a student attending college right out of high school or coming back to college later in life looking to earn a certificate in a high-paying technical field where you can go to work fast. UAHT offers a variety of great options to choose from, including business, computer information science, cybersecurity, nursing, electromechanical technology, construction technology, diesel technology, HVAC, welding, EMT & Paramedic, truck driver training, and more. UAHT also offers unique programs to our region, including bladesmithing, funeral services, and solar technology. Many of these programs can be completed in less than one year, allowing you to get a good job quickly. Technical jobs are good-paying, high-demand jobs, and UAHT's professional instructors will train you with the skills you need to be competitive in the job market.

For those students looking to transfer to a 4-year university, UAHT offers associate degrees in-person and online that transfer to any Arkansas public university. UAHT also has transfer agreements with Texas A&M Texarkana in Texas, ensuring easy transfer for students who want to complete their bachelor's degree locally.

UAHT also offers adult education, GED, community education, and business and industry training courses to help enrich your learning or become more job competitive through quality, cost-effective employee assessment and training. UAHT can develop specialized training for companies with specific workforce needs.

The presence of Hempstead Hall on the

Hope campus provides students and the community with many cultural enrichment opportunities, as well as space to host trainings and events. In addition, Hempstead Hall has hosted chart-topping Grammy Award-winning musicians and entertainers.

Another great reason to attend UAHT is that it saves you money. UAHT has one of the most affordable tuition and fee costs in Arkansas, making our college one of the best values in higher education. UAHT also offers over 125 institutional and private scholarships and a book rental program that costs students only \$20 per credit hour or about \$60 for many courses. Combined with federal and state financial aid opportunities, most of our students graduate college debt-free.

The environment at UAHT is open and friendly, allowing our students to thrive socially and academically. UAHT has small class sizes ensuring that students have the opportunity to ask questions and get individual attention from instructors. Our campuses have a variety of student organizations and on-campus activities, including student events and intramural sports.

Every aspect of the UAHT mission revolves around student success. From our state-of-the-art facilities and technology to our quality student services and world-class teachers, our purpose is to help our students reach their educational goals.

UAHT is your bridge to the future!





Hempstead Hall, a multipurpose community conference center/auditorium based on the UA Hope campus, opened in 2013 and in a short time, has become a premier entertainment venue for all of southwest Arkansas. Over the past four years, the facility has hosted such world-class acts as the Little River Band, Travis Tritt, Sara Evans, Charlie Daniels, Lorrie Morgan, 38-Special, Trace Adkins, the Oak Ridge Boys, the Temptations, the Spinners, Clint Black, Ronnie Milsap as well as the

Arkansas Symphony Orchestra, the annual Hope/Hempstead County Chamber of Commerce banquet and membership meeting, and hundreds of conferences, banquets, dinners, awards events and area graduations. Custom designed by Little Rock architects, Hempstead Hall is a massive 64,000 square feet with 7,568 dividable square feet, and it features main theater seating for 1,600, banquet seating for 800, an outdoor amphitheater and dividable conference seating for small groups

or large groups up to 1,200. Indoors the facility features a full performance concert stage, a commercial kitchen, and being on the UA Hope campus, includes hundreds of parking spaces. Over 24,000 guests visit Hempstead Hall annually attending shows, graduations, civic club luncheons, or special events. Hempstead Hall is also a public venue available to rent for a variety of events from Arkansas conventions and professional conferences to local school functions and job training.





# HISTORIC WASHINGTON STATE PARK

FORMER STATE CAPITOL THRIVES  
AS A POPULAR VISITOR'S STOP



## WASHINGTON'S HISTORY

Sam Houston, Davy Crockett, and Jim Bowie each traveled through Washington before they fought for Texas independence. While in Washington, Bowie commissioned local blacksmith James Black to make a Bowie knife. Through the 1840s, Cherokee and Choctaw Indians travelled through Washington on their way to Indian Territory (present-day Oklahoma) due to the policy of Indian Removal. During the state's early years, Washington was a thriving community and a major service center for area farmers and plantation owners. It was situated on the Southwest Trail, a major commercial route, and was also the county seat of Hempstead County. During the Civil War, the Confederate government of Arkansas fled from Little Rock to Washington. The 1836 Hempstead County Courthouse in Washington served as the state capitol from 1863 to 1865.

## RESTORATION AFTER DIVISION

In 1929, the United Daughters of the Confederacy secured money from the state legislature to fund the restoration of the 1836 Hempstead County Courthouse. In 1958, a group of Washington citizens formed the Pioneer Washington Restoration Foundation to preserve the town's old structures and operated tours of some of the historic homes for fifteen years.

In 1973, the foundation donated property, buildings, and antiques, and Old Washington Historic State Park became the thirty-fourth Arkansas state park.

## TODAY IN WASHINGTON

In September, 2006, the park's name was changed to Historic Washington State Park. The park offers guided tours of historic homes and structures, museums, and interactive and living history programs.

The park hosts several special events annually, including the Five-Trails Rendezvous in February and the Jonquil Festival in March. In November, visitors converge on the park for Civil War Weekend, and in December, the entire park is decorated in traditional nineteenth-century decorations for the Christmas and Candlelight celebration.

Historic Washington State Park is open all year from 8 a.m. until 5 p.m. daily and is closed only on Thanksgiving, Christmas Day and New Years Day. Throughout the year, special events are hosted by the park, including Shakespeare in the Park in the WPA-era gymnasium, and weekend concerts on the lawn of the 1874 courthouse in the summer at announced times; and, the historical production, "Trial By Jury," which recreates the first murder trial conducted in Hempstead County, also at announced times.

[paffordems.com](http://paffordems.com)



**PAFFORD**  
MEDICAL SERVICES

*Your Emergency  
Medical Services  
Provider for Hope &  
Hempstead County*

*In the event of an emergency,  
dial 911.*



**PAFFORD**  
HEALTH SYSTEMS  
Medical Clinic

*Primary Care Clinic Located in Hope, AR*



**100 East 20th Street  
Suite D  
Hope, AR  
870-729-1911**





# JAMES BLACK SCHOOL OF BLADESMITHING & HISTORIC TRADES



**JAMES BLACK SCHOOL**  
BLADESMITHING AND HISTORIC TRADES  
— HISTORIC WASHINGTON, ARKANSAS —

The University of Arkansas Hope-Texarkana (UAHT) launched the new James Black School of Bladesmithing and Historic Trades in 2020 to celebrate and preserve the art of bladesmithing and the birth of the famous Bowie Knife in Arkansas. In 1831, James Black crafted the original Bowie knife in Washington, Arkansas. The result was that Washington, Arkansas, and Black became almost immediately famous for producing what is now recognized as the official blade of the State of Arkansas and the National American Blade. The James Black School celebrates, preserves, and promotes the art of bladesmithing and historic trades,


and the birth of the iconic Bowie Knife in Historic Washington. Students at the school will study the art and science of Bladesmithing, Forging, Handles and Guards, Damascus Steel, and more. UAHT will operate the James Black School from the college's beautiful and historic facility in Historic Washington. The college offers a Certificate of Proficiency in Bladesmithing and non-credit bladesmithing courses. Bladesmithing is the art of making blades for knives, swords, and daggers by using a forge, hammer, anvil, and other smithing tools. The courses in the program will include Introduction to Bladesmithing,

Intermediate Bladesmithing, Knifemaking, Handles and Guards, Damascus Steel, and Advanced Bladesmithing.

The James Black School of Bladesmithing and Historic Trades is unique in the University of Arkansas System and reflects the same quality and commitment to excellence in student learning that is the centerpiece of the missions of both the University of Arkansas Hope-Texarkana and the University of Arkansas System.

The James Black School is located at Historic Washington State Park, 601 Lawrence Street, Washington, Arkansas. For more information, call 870-722-8172 or visit [uaht.edu/bladesmithing](http://uaht.edu/bladesmithing).






Klipsch Heritage Museum Association's (KHMA) vision is to foster interest in Science, Technology, Engineering, Arts, and Mathematics by the example of Paul W. Klipsch. KHMA's mission is to restore, preserve, maintain and display Klipsch-related artifacts and archival materials for historic purposes and to host educational activities and events. KHMA operates four facilities in Hope, AR. The facilities include the Klipsch Museum of Audio History, Klipsch Auditorium, Klipsch Education Center, and the KHMA Visitors Center. The visitors center offers a listening experience utilizing a variety of speakers spanning decades.

Contact: Phone: 833.794.5287 / Email: [info@klipschmuseum.org](mailto:info@klipschmuseum.org) / Address: 403 W Division Street, Hope, AR.

**VISIT US ONLINE TO JOIN THE CONVERSATION.**

**facebook**  **YouTube** [klipschmuseum.org](http://klipschmuseum.org)





# SOUTHWEST ARKANSAS ARTS COUNCIL

## REGIONAL ORGANIZATION PROMOTES ARTISTS, CULTURAL EVENTS & CONCERTS

The Southwest Arkansas Arts Council, founded in 1986, operates as one of Hempstead County and the surrounding area's primary sources for cultural enhancement. SWAAC -- the Arts Council -- sponsors a wide variety of educational opportunities, as well as cultural experiences, and as a venue for artistic expression by local artists.

The aesthetic intent of the Arts Council is to bring exciting and vital arts experiences to the community. The Arts Council operates on one mission -- to enrich the community through experience, expression and education in the arts.

The Arts Council sponsors 10 to 15 Artist in Education residencies each year in area schools, designed to strengthen student language, literacy, math and science skills through arts activities. Area school children use art to process, synthesize, analyze, and evaluate -- all higher level learning skills.

As a downtown Hope entity, the Arts Council offers artists gallery space to showcase their talents. Gallery shows include local and

regional professional and amateur artists, exhibiting their works in such genres as painting, photography, mosaics, and woodworking.

In partnership with Hempstead Hall on the Hope campus of the University of Arkansas, the Arts Council brings world-class programming to Southwest Arkansas. Program series shows have included everything from the Arkansas Symphony to live, on-stage, ice skating.

Audiences have opportunities to experience top recording concert artists, live and on stage. The loyal support of our members helps SWAAC to continue programming that strengthens our community and enriches lives. Member benefits include discounts on tickets, workshops and classes, invitations to gallery exhibit opening receptions, monthly newsletter, members only events, notification of preferred customer ticket sales, tax deduction as allowed by the IRS. Student, Individual, Family and Business levels are available. To join or for more information, email [swaac13@gmail.com](mailto:swaac13@gmail.com) or call 870.777.8200.





# BUILD YOUR BRIDGE

Rethink what's possible at UAHT, where an unparalleled combination of high-quality education and low-cost tuition come together in a location close to home. Discover career and technical programs designed to immediately launch your career, transfer programs that place you firmly on the path to pursuing a bachelor's degree and a friendly campus with caring teachers, student services and state-of-the-art facilities. It's time to start building *Your Bridge to the Future.*

**UofA**  
HOPE • TEXARKANA

870.777.5722 | [uaht.edu](http://uaht.edu)





# Burke & Walker

INCOME TAX & BOOKKEEPING SERVICE

**3337 Hwy 29 N | Hope, AR | 870-777-8258**

Keri Shepherd, P.A. - Owner

Merritt S. Shepherd, P.A. | Vikki Bearden

This year marks our 50th anniversary of Burke & Walker, PTR. We are a 3rd generation, family-owned, full-service accounting firm, offering everything from personal income tax preparation, corporate and partnership tax preparation, non-profit returns, payroll, bookkeeping, quarterly reports, budgeting, in essence your one-stop-shop for all things business/accounting related."

**Our normal, day to day hours throughout tax season will be:**

**Monday - Friday from 9:00 am until 5:30 pm,  
and after hours of course by appointment.**

We will work around your schedule, however we may have to. Consultation is free.

**COME CELEBRATE OUR 50TH YEAR WITH US THIS YEAR!**